



GT INNINGS SOUTH
1947-74

 paulwallace

Great Innings South, Watton At Stone, SG14 3TQ |
£235,000 | Leasehold

Great Innings South, Watton At Stone, SG14 3TQ

A rare opportunity to acquire a beautifully presented 2 bedroom ground floor maisonette in the charming village of Watton At Stone. This chain-free property has been tastefully decorated in a contemporary style, making it an ideal choice for first-time buyers or investors. The convenient location offers easy access to the local rail station, providing direct routes to Finsbury Park, Moorgate, and Kings Cross. The village itself boasts a variety of amenities including 2 pub/restaurants, a large convenience store, a hairdresser, and a Chinese take away. For those who enjoy the outdoors, the local open countryside is just a short distance away. Additionally, the property benefits from close proximity to road links along the A602, providing easy access to the A1 and A10. This delightful maisonette offers a comfortable and convenient lifestyle in a sought-after village setting.

Key features

- Chain-free 2 bedroom ground floor maisonette
- Contemporary decor throughout
- Ideal for first-time buyers or investors
- Close proximity to local rail station
- Range of amenities within the village
- Easy access to open countryside
- Convenient road links to A1 and A10
- Charming village setting



 paulwallace
estate agents

hoddesdon@paulwallace.co.uk

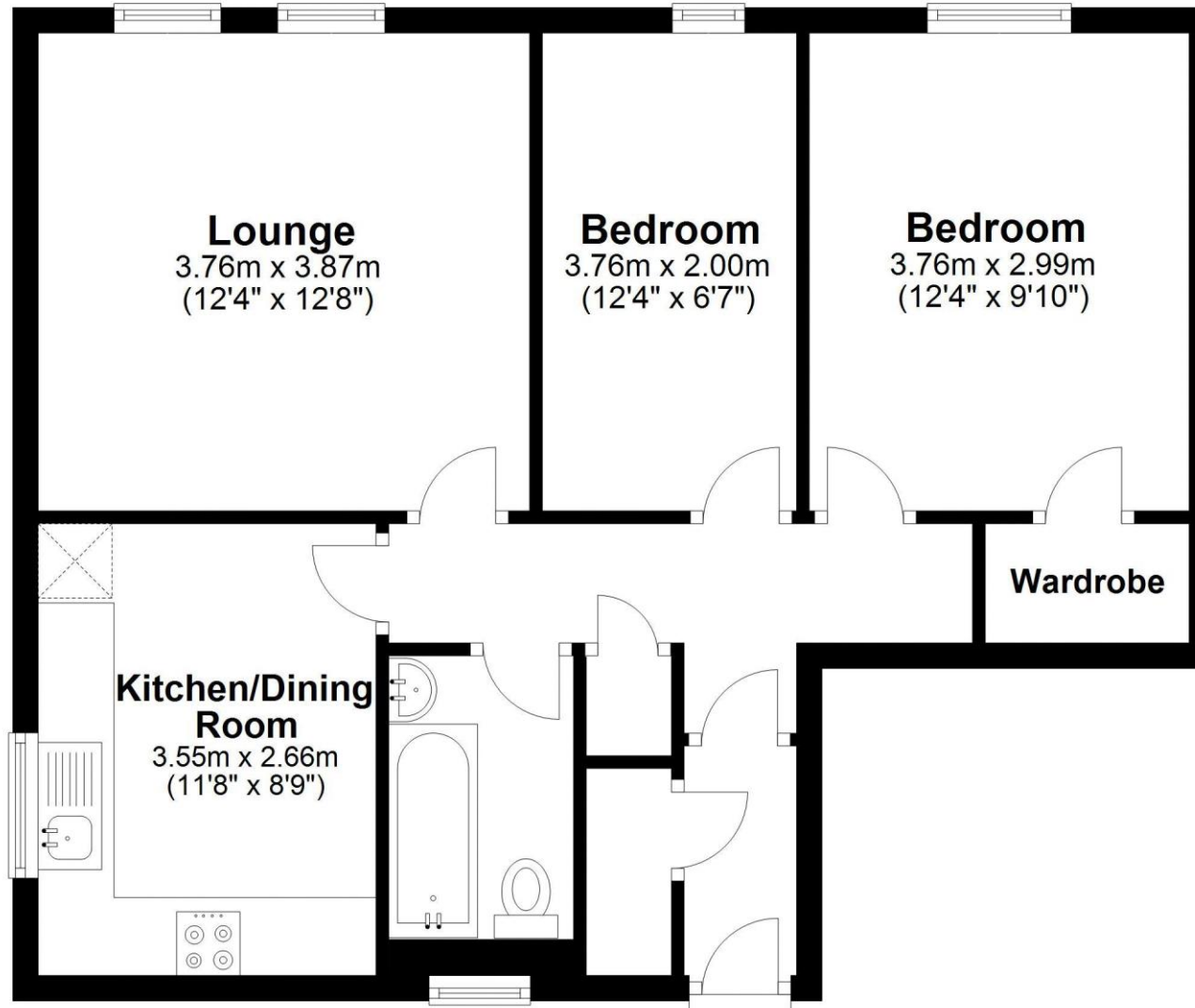
01992 466471





Ground Floor

Approx. 59.1 sq. metres (635.9 sq. feet)



Total area: approx. 59.1 sq. metres (635.9 sq. feet)

FOR ILLUSTRATIVE PURPOSES ONLY. NOT TO SCALE. Whilst every attempt had been made to ensure the accuracy of the floor plan shown, all measurements, positioning, fixtures, features, fittings and any other data shown are an approximate interpretation for illustrative purposes only and are not to scale. No responsibility is taken for any error, omission, miss-statement or use of data shown. Property marketing provided by Foto Ltd.

Plan produced using PlanUp.



Registered Address: Unit 3 The Brookfield Centre, Cheshunt, Herts, EN8 0NN Company Registration Number: OC414280 | VAT Number: 276958046©2022 Paul Wallace Group LLP trading as Paul Wallace Estate Agents



Paul Wallace Estate Agents

70 High Street
Hoddesdon
Hertfordshire
EN11 8ET



01992 466471



hoddesdon@paulwallace.co.uk



www.paulwallace.co.uk



Opening Times

Mon	9am to 6.30pm
Tues	9am to 6.30pm
Wed	9am to 6.30pm
Thurs	9am to 6.30pm
Fri	9am to 6.30pm
Sat	9am to 5.00pm
Sun	Closed



paulwallace
estate agents

Agents Note: Whilst every care has been taken to prepare these sales particulars, they are for guidance purposes only. All measurements are approximate and are for general guidance purposes only and whilst every care has been taken to ensure their accuracy, they should not be relied upon. Potential buyers are advised to recheck the measurements.